

## About collection

Please put out garbage by 8:30 a.m.



- Garbage collection will be carried out in rounds starting from 8:30 in the morning until the evening.
- Collection times will differ depending on location and the type of garbage or recycling waste.
- We ask that you absolutely make sure to put out your garbage by 8:30 in the morning since your garbage will remain uncollected if you put it out after garbage has already been collected.

### In case of typhoons or heavy snow, the garbage might not be collected.

If changes are made that affect collection, we shall notify you on the day of collection using the disaster-risk management (PA) wireless broadcast, disaster-risk management email, and the municipal website, so we ask that you check for such changes.

Registration for the disaster prevention mailing list



QR CODE After you click the link, please follow the instructions and send a blank email.  
For more information, please contact the Risk Management Division  
TEL: 23-1175

## Bringing sorted garbage to the waste disposal plant yourself

● You can bring sorted garbage to the waste disposal plant, the landfill site or the recycling and storage facility.

※ Use a designated garbage bag and sort out your trash in the same way you would usually.

● If you do not sort your garbage, it may not be accepted.

[Precaution] For any items you have carried in, we ask that you unload these items yourself.

● In order to prevent accidents, we ask that you drive slowly when on premises, and that you park your car in reverse.

● During the year-end and New Year holidays, the opening hours should be announced via a bulletin board near your garbage collection site or in Kobayashi city's newspaper.

※ Please note that waiting times may be long on Sundays as the plant tends to get crowded.

◎ **Opening hours:** Monday through Friday and Sundays **[except holidays]**

8:30AM~12:00PM

1:00PM~4:30PM

※ Since it will get crowded, we ask that you make every effort to carry in any items by 11:30 a.m. if visiting in the morning, or by around 4:00 p.m. if visiting in the afternoon.

◎ Please bring a valid ID (driving license My Number Card or such) as proof of residency in Kobayashi

◎ If you have any questions, please contact the waste disposal plant. ☎ 24-0959

## Bringing sorted garbage to the waste disposal plant yourself

### ◎ Items that you can bring to the waste disposal plant

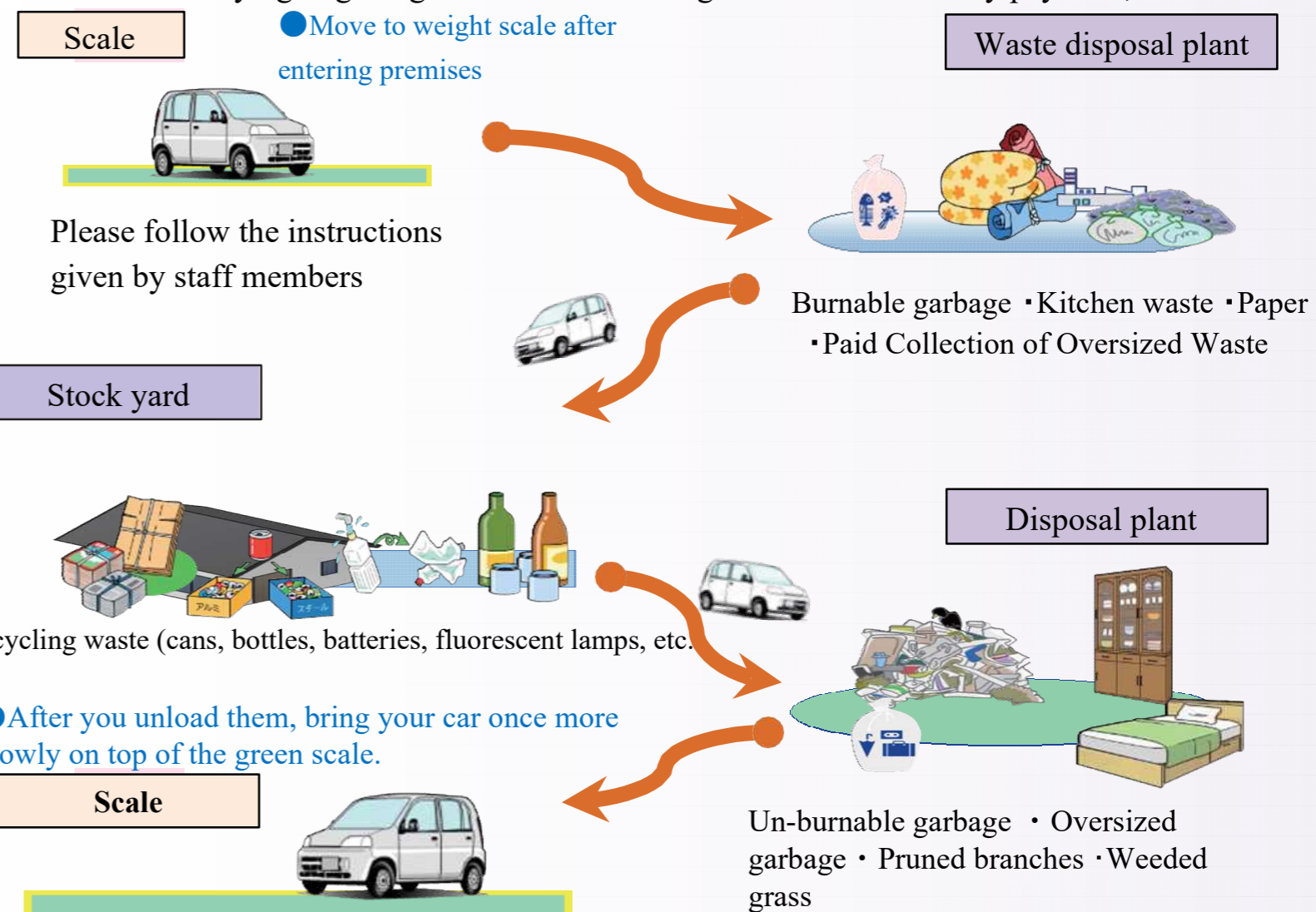
- Burnable garbage
- Un-burnable garbage
- Recyclable items
- Kitchen waste
- Paper
- Plastic containers
- Oversized garbage

### ⚠ Precautions

● This facility is used to treat any general waste materials originating from the homes of Kobayashi City residents.

For this reason, we are unable to accept any garbage that is brought in from outside of the city.

● Based on the Waste Disposal Act, business operators and individuals are prohibited from carrying in garbage under contract in agreement for monetary payment, etc.



※ If you bring oversized garbage that requires payment, please pay at this point.